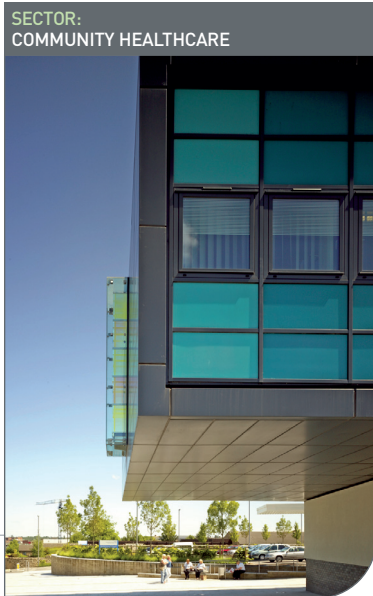


SWANKE HAYDEN CONNELL INTERNATIONAL LIMITED

STOCK BUILDING, JOINER STREET, SHEFFIELD S3 8GW

01  
02  
03



SECTOR:  
COMMUNITY HEALTHCARE



SECTOR:  
COMMERCIAL OFFICE FIT-OUT



SECTOR:  
MENTAL HEALTHCARE

## Mansfield Community Hospital

Mansfield

The redeveloped Mansfield Community Hospital, is a landmark for the local community, positioned within the town centre to provide ease of access for both staff and visitors.

The new entrance building contains a café, patient information and administration centre overlooking a landscaped courtyard providing a legible public arrival point. Wayfinding to all departments is orientated from the new entrance building, with its geometry emphasising its role as a hub between hospital and community.

Building expansion elsewhere on the site have streamlined clinical functions, thereby improving patient experience. Existing wards have been renovated to fully integrate new and existing interior environments.

This project was part of the overall strategy for transforming the health delivery system for Sherwood Forest Hospitals NHS Foundation Trust and Mansfield District PCT as part of a larger PFI project.

## New Accommodation Project

Sheffield

As part of a multi disciplinary team SHCA helped identify a suitable office building in Sheffield for the relocation of two Government departments. In parallel, they consulted with user groups to develop a workplace brief incorporating new ways of working and a corresponding optimal model layout.

This model was used to inform the selection of the City centre building. SHCA then adapted it to suit the physical site constraints, developing a full fit-out and interior design scheme. Though designed within a modest budget, the interior is stylish yet timeless and the client has expressed high levels of satisfaction after occupation

The project achieved BREEAM 'excellent' and has been shortlisted for Building Magazine's 2010 Sustainability Awards (best office refurbishment category), RICS Pro Yorkshire Awards and Sheffield Telegraph Environmental awards.

## Learning, Development and Conference Centre

Rampton Hospital

The new LDCC at Rampton High Security Hospital is a project commissioned by Nottinghamshire Healthcare NHS Trust, delivered as a P21 scheme through Laing O'Rourke. Rampton Hospital offers a number of national mental health and learning disability services and aspires to build upon its status as a centre of excellence for both clinical and support services.

The new building provides modern educational facilities for face to face teaching using the latest technology, as well as electronic learning facilities available to all staff. The quality of the facilities was designed to enable hosting of both local and national events, thus promoting the Hospitals status.

The project is assessed as BREEAM very good, with layout and materials designed to form part of the hospital strategic sustainability agenda.